

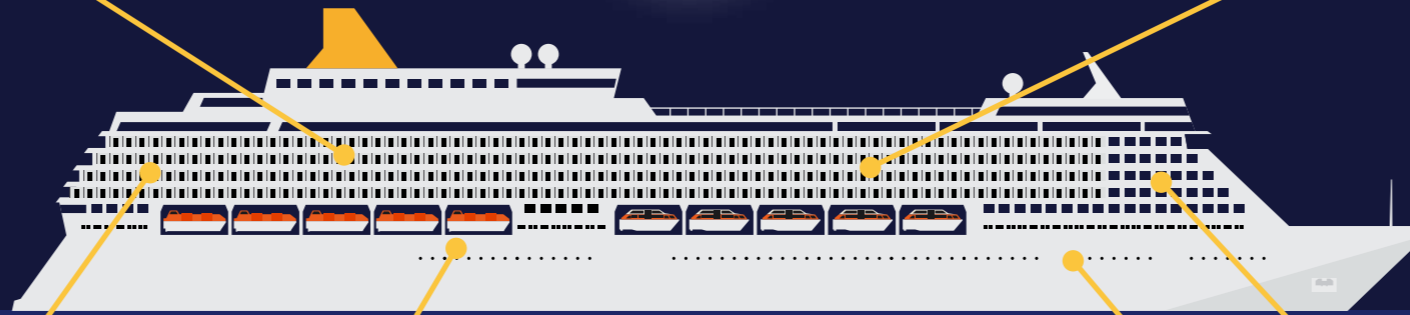
# LED Lighting Solutions for Cruise Ships



The bright side of the ship



# Our LED lighting solutions for cruise ships



## PAX Cabin

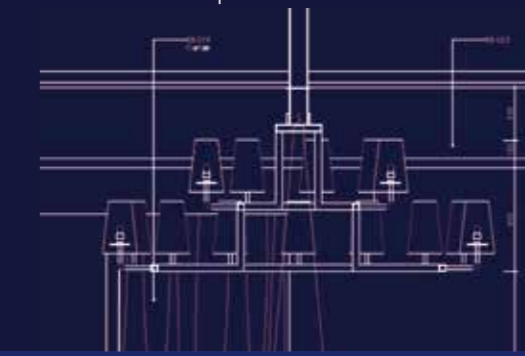
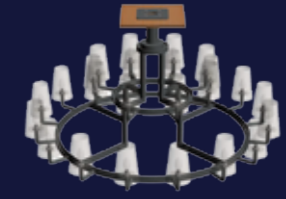


Individually design and innovative ideas for cabin lighting is our daily business. Our discerning customers count on high-value workmanship as well as our passion for detail. We meet these requirements from one source, working closely with architects while maintaining the highest standards of quality.



## Tailor made

Our customer's ideas together with our experience create unique light objects which meet the requirements on board a ship.



## PAX Corridor



The combination of modern electronics and special sensors makes creating energy-efficient corridor lighting possible without sacrificing a pleasant lighting mood. Illuminated signs with high operational safety add to the concept of modern corridor lighting.



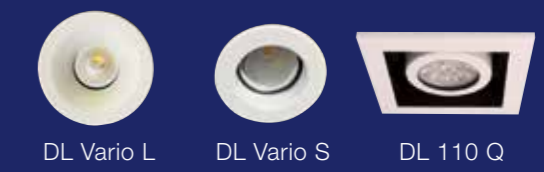
## Technical area



We offer flexibility with unyielding quality. No matter if it's corrosion resistant, waterproof multipurpose lights, floodlights with high luminous power or USPH compliant kitchen lights which illuminate the workspace evenly, high reliability and total functionality are equally as important to us as the consistent implementation of maritime lighting standards.



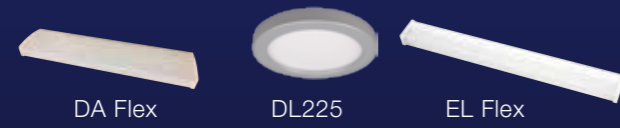
## Public Area



Even in public areas, architects and lighting designers demand a lot from general lighting. Our newly developed downlight series, the DL Vario, meets this demand. Highly detailed and precise illumination is ensured thanks to the lights' ability to rotate and swivel and thanks to various reflector systems. Different light colours, various dimming settings and special warm-dim LEDs let you create different lighting moods. The large range of ornamental rings in custom colour schemes lets our customers have creative free rein and allows for easy integration into the respective ceiling system.



## Crew area



There is an extensive range of robust and low-maintenance lighting at attractive prices available for installation in the crew area.



# Whatever you need, we make it possible

LightPartner sees itself as your creative partner who examines individual ideas and concepts creatively, implements them innovatively and advises you competently. From the first pencil outline of an idea to the prototype and from there all the way to the finished product, we require very little time. And finishing is carried out according to the highest quality standards:

> High-end products for high-end ships.

expertise

commitment

reliability

innovation

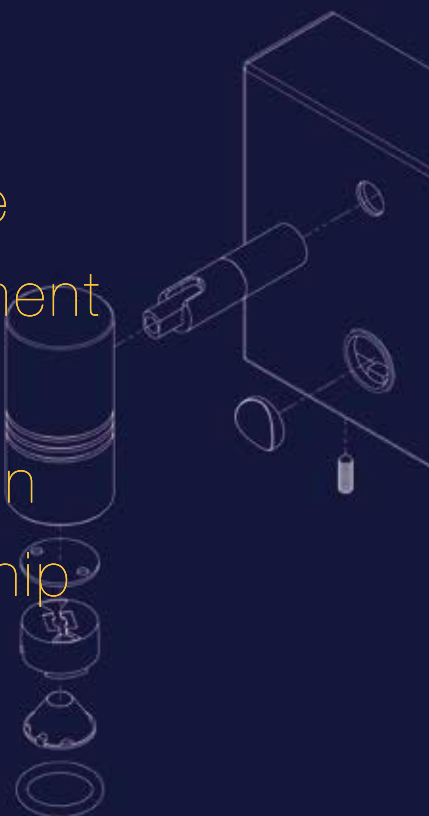
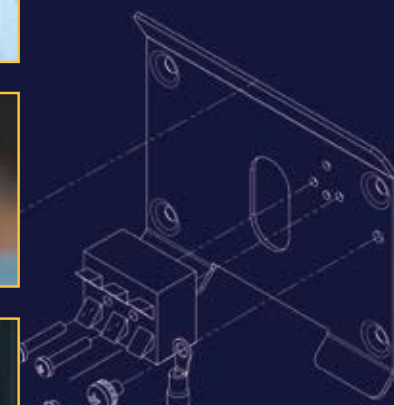
partnership



## Leading in marine lighting

In addition to know-how, high quality and punctual delivery, LightPartner also offers an extremely favorable cost-benefit ratio here. Functional, low-maintenance and long-lasting, our lighting units meet all requirements of modern, cost-optimized shipping.

> The name **LightPartner** stands for leading state-of-the-art technology.





Settings standards for quality and service  
when it comes to lighting solutions.

This is the world of LightPartner.

LightPartner®

Lichtsysteme GmbH & Co. KG  
Am Mohrenshof 7  
D-28277 Bremen / Germany

Fon: +49 (0)421 - 87 195-0

Fax: +49 (0)421 - 87 195-19

[www.lightpartner.de](http://www.lightpartner.de)