



BERTH LIGHT WITH SWITCH, SLIM DESIGN,
IDEAL FOR PULLMAN BERTHS

Design	According to rules of maritime classification societies and relevant standards
Housing	Galvanized steel, powder coated white (RAL9016)
End caps	Polycarbonate, white
Diffuser	Polycarbonate, opal
Switch	On / off switch, 2-pole
Mounting	2 mounting holes, \varnothing 5.5 mm
Protection class	IP30
Weight	0.5 kg
Light source	Linear LP LED module
Wattage	Max. 3 W
CCT (color)	4,000 K
CRI	\geq 80
Voltage	220–240 V AC
Frequency	50–60 Hz

PART NO.

KJ56 5117008201-002

SPARE PARTS

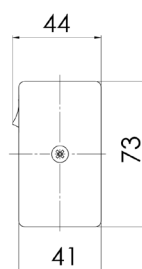
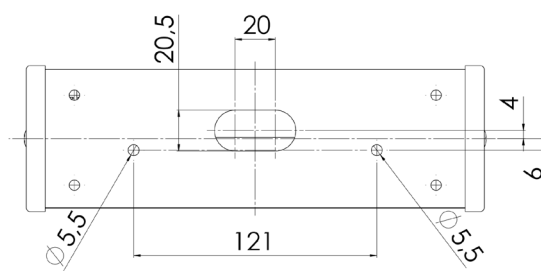
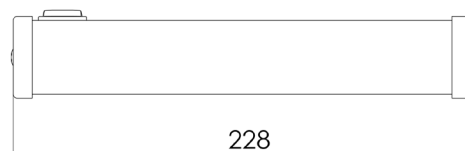
PART NO.

Cover 7112001300

End caps (2 pcs) 7504000100

EXTRAS

- > 120 V AC execution
- > Different color temperatures



[mm]

