



LED DOWNLIGHT WITH CHANGEABLE COVER RING,  
FOR CABINS, ACCOMMODATION AND PUBLIC AREAS

<b>Design</b>	According to rules of maritime classification societies and relevant standards
<b>Housing</b>	Galvanized steel, powder coated white (RAL9016)
<b>Decorative ring</b>	RAL9016, chrome or steel brushed (has to be ordered separately, see next page)
<b>Mounting</b>	Max. 6 mounting holes, Ø 4.5 mm
<b>Connection type</b>	Connection cable with Wago 3-pole plug
<b>Protection class</b>	IP20 / IP44 with lens
<b>Weight</b>	DL63S: 0.9 kg DL63M: 1.1 kg DL63L: 1.2 kg
<b>Light source</b>	LED module
<b>Wattage</b>	DL63S: max. 5 W DL63M: max. 10 W DL63L: max. 20 W
<b>CCT (color)</b>	3,000 K
<b>Luminous flux</b>	DL63S: 500 lm (with satined glass) DL63M: 1,000 lm (with satined glass) DL63L: 2,000 lm (with satined glass)
<b>CRI</b>	≥ 80
<b>Voltage</b>	220–240 V AC
<b>Frequency</b>	50–60 Hz

## PART NO.

DL63S	5503002500-xxx
DL63M	5503002600-xxx
DL63L	5503002700-xxx

## SPARE PARTS

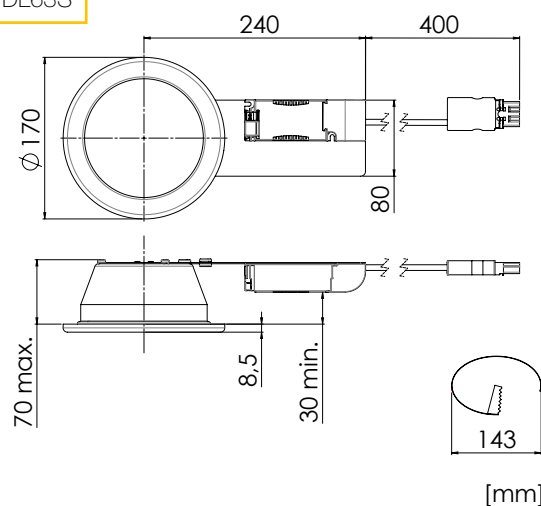
## PART NO.

Female connector Wago	7124001800
-----------------------	------------

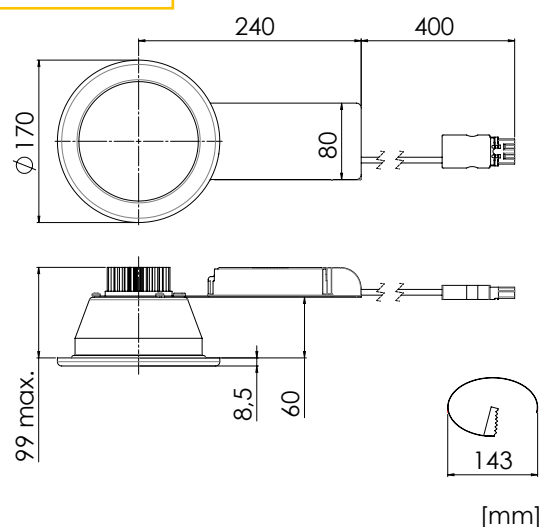
## EXTRAS

- > 120 V AC execution
- > Different connectors
- > Different color temperatures
- > Dimmable
- > Emergency battery back-up

### DL63S



### DL63M / DL63L





**Ring A2, 5543000200-005**  
Steel / RAL9016 / Satin lens



**Ring A2, 5543000200-003**  
Chrome / Satin lens



**Ring A2, 5543000200-072**  
Steel / RAL9016 / Clear lens RED



**Ring A2, 5543000200-053**  
Chrome / Clear lens RED



**Ring A2, 5543000200-015**  
Steel brushed / Satin lens

Different finishes on request

