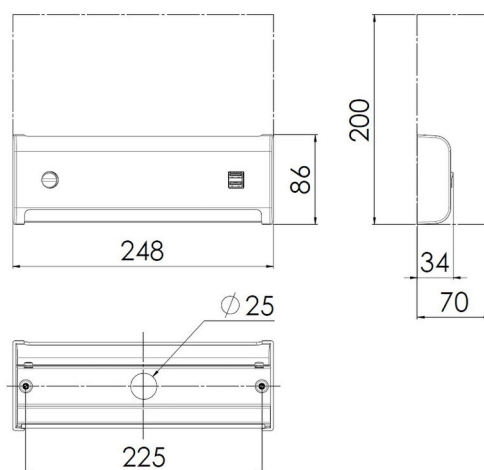


PART NO.

| | |
|-------------------|----------------|
| Black with USB-A | 5117001600-001 |
| Black with USB-C | 5117001600-009 |
| Black without USB | 5117001700-001 |
| White with USB-A | 5117001600-002 |
| White with USB-C | 5117001600-008 |
| White without USB | 5117001700-002 |

BERTH LIGHT WITH SWITCH, SLIM DESIGN, IDEAL FOR PULLMAN BERTHS

| | |
|-------------------------|--------------------------------------------------------------------------------|
| Design | According to rules of maritime classification societies and relevant standards |
| Housing | Polycarbonate, black or white |
| Diffuser | Polycarbonate, opal |
| Switch | On/off switch |
| Specials | 2 × USB (type A or C), 5V/2A |
| Mounting | 2 mounting holes |
| Protection class | IP20 |
| Light source | Linear LP LED module |
| Wattage | 1 × 3 W LED |
| CCT (color) | 3,000 K |
| Luminous flux | 250 lm |
| CRI | ≥ 80 |
| Voltage | 120–230 V AC |
| Frequency | 50–60 Hz |



[mm]
maintenance area

Practical storage pocket

