



ADJUSTABLE LED READING LIGHT WITH SWITCH
FOR CABINS AND ACCOMMODATION AREAS

Design	According to rules of maritime classification societies and relevant standards
Housing	Stainless steel, brushed
Switch	1-pole switch
Swivel range	350°
Mounting	4 mounting holes, Ø 4.5 mm
Cable entry	Ø 42 mm
Protection class	IP20
Weight	0.6 kg
Light source	LED
Wattage	Max. 1 W
CCT (color)	2,700 K
Voltage	120–240 V AC
Frequency	50–60 Hz

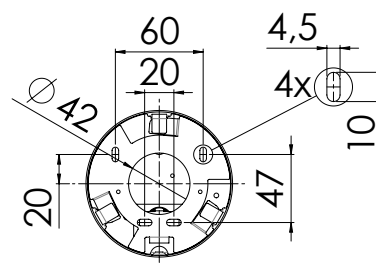
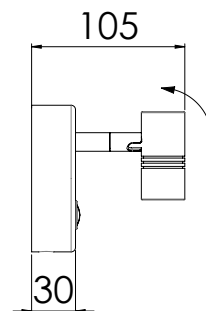
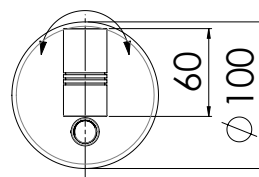
PART NO.

WL100

5127011200-001

★ EXTRAS

- > 24 V DC execution
- > Different finishes
- > Different color temperatures



[mm]

