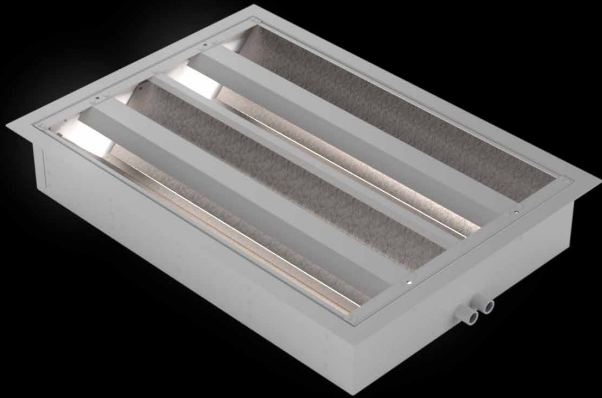
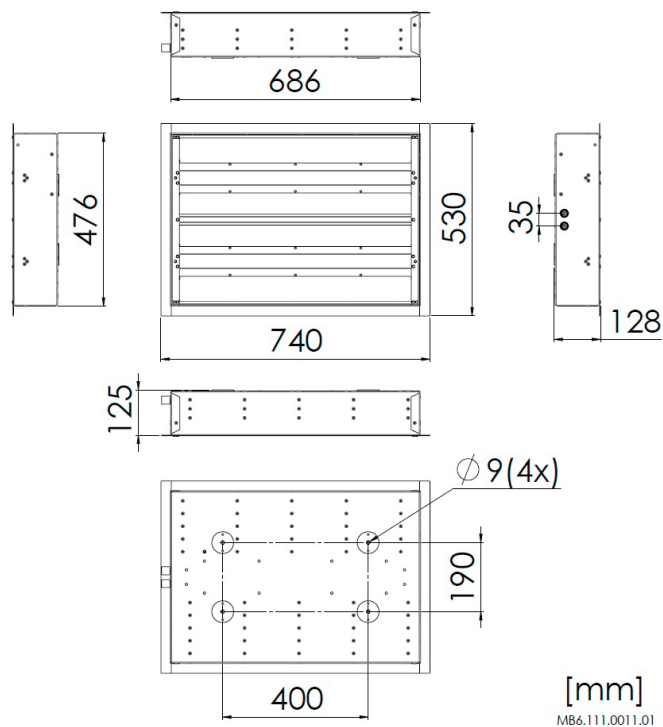


RECESSED CEILING LUMINAIRE

DE62










RECESSED CEILING LUMINAIRE WITH INDIRECT LIGHTING FOR OFFICES AND CONTROL ROOMS



STANDARD CONFIGURATION

Housing	Galvanized steel powder coated white (RAL9010)
Cover	Alu reflector
Mounting	4 holes, Ø 9 mm
Cable entry	2 cable glands
Protection class	IP23
Light source	Linear LP LED modules
Wattage	2 × 9,5 W
Luminous flux	1,300 lm
CCT (color)	5,000 K
CRI	≥ 80

AVAILABLE FEATURES

	EMI proof
	Shock proof
	Vibration resistant
	NVG compatible
	Adaptation light
	Multi-circuit
	Controllable

YOUR REQUIREMENTS

Please contact us for different configurations or further information on this luminaire type. Based on your requirements, the final part number will be provided.

Technical modification reserved without prior notice.



LIGHTPARTNER LICHTSYSTEME GMBH & CO. KG
AM MOHRENSHOF 7 · 28277 BREMEN · GERMANY
+49 (0)421 - 87 195 - 0 · SALES@LIGHTPARTNER.DE

LIGHTPARTNER NAVY